

**Corporate Office**  
 21850 88<sup>th</sup> Place South  
 Kent, WA 98031  
 Office: (253) 872-2000  
 Email: info@nwindustrialrepair.com



**Idaho Office**  
 62 W 465 N, #3  
 Blackfoot, ID 83221  
 Office: (208) 715-0039  
 Email: info@nwindustrialrepair.com

*Providing the Northwest with the highest quality service and repair since 1994*

**WE REPAIR ALL MAKES AND MODELS OF PD BLOWERS, BOOSTERS, VACUUM PUMPS & PUMPS**

M-D Pneumatics® ▪ Kinney® ▪ Tuthill ▪ Atlas Copco ▪ Stokes ▪ Edwards ▪ Leybold ▪ Welch ▪ DuroFlow® ▪ Rietschle ▪ Roots™ ▪ Aerzen ▪ NES  
 Gardner Denver ▪ Sutorbilt® ▪ Busch ▪ Pfeiffer Vacuum ▪ Alcatel ▪ Titan Pump ▪ Goulds Pumps ▪ Gorman Rupp® ▪ Viking® ▪ Aurora ▪ Kice

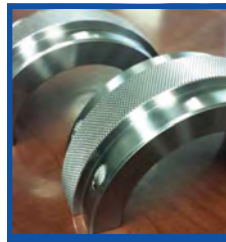


## General Service Offering

- Service & Repair
- 24 Hour Emergency Service
- New Equipment Replacement Sales
- Used Equipment Sales
- Base Repair Quotes
- Leak Testing
- Repair Kits & Parts
- Field Service & Troubleshooting
- On-site Repair & Maintenance
- Machining & Welding
- Pickup & Delivery
- One Year Full Repair Warranty



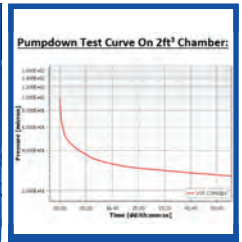
EQUIPMENT REPLACEMENT



MACHINING



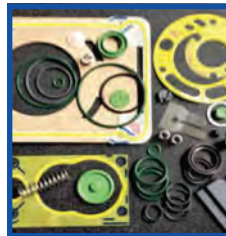
SERVICE & REPAIR



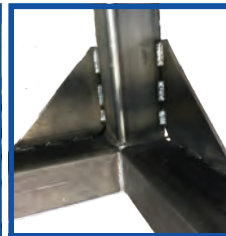
PUMPDOWN TEST CURVES



LEAK TESTING



REPAIR KITS & PARTS



WELDING

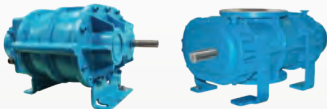


STOCKING DISTRIBUTOR

## M-D Pneumatics®



HIGH-PRESSURE INDUSTRIAL BLOWERS



INTERCHANGEABLE WITH ROOTS, SUTORBILT AND DURFLOW



BLOWER PACKAGES

M-D Pneumatics® Air & Gas Rotary Positive Displacement Blowers.  
 Custom Engineered Package Systems Available.



LIQUID RINGS



DRY SCREWS



LIQUID RING COMPRESSORS



ROTARY VANES



VACUUM BOOSTERS



ENGINEERED PACKAGES

Nash Classic, Siemens and Flowserve SIHI drop-in replacement liquid rings  
 and spare part interchangeability.



ANSI PUMPS



TRASH PUMPS



ROTARY GEAR PUMPS



AODD PUMPS



CENTRIFUGAL PUMPS



PROGRESSIVE CAVITY PUMPS

Custom Engineered Package Systems available.